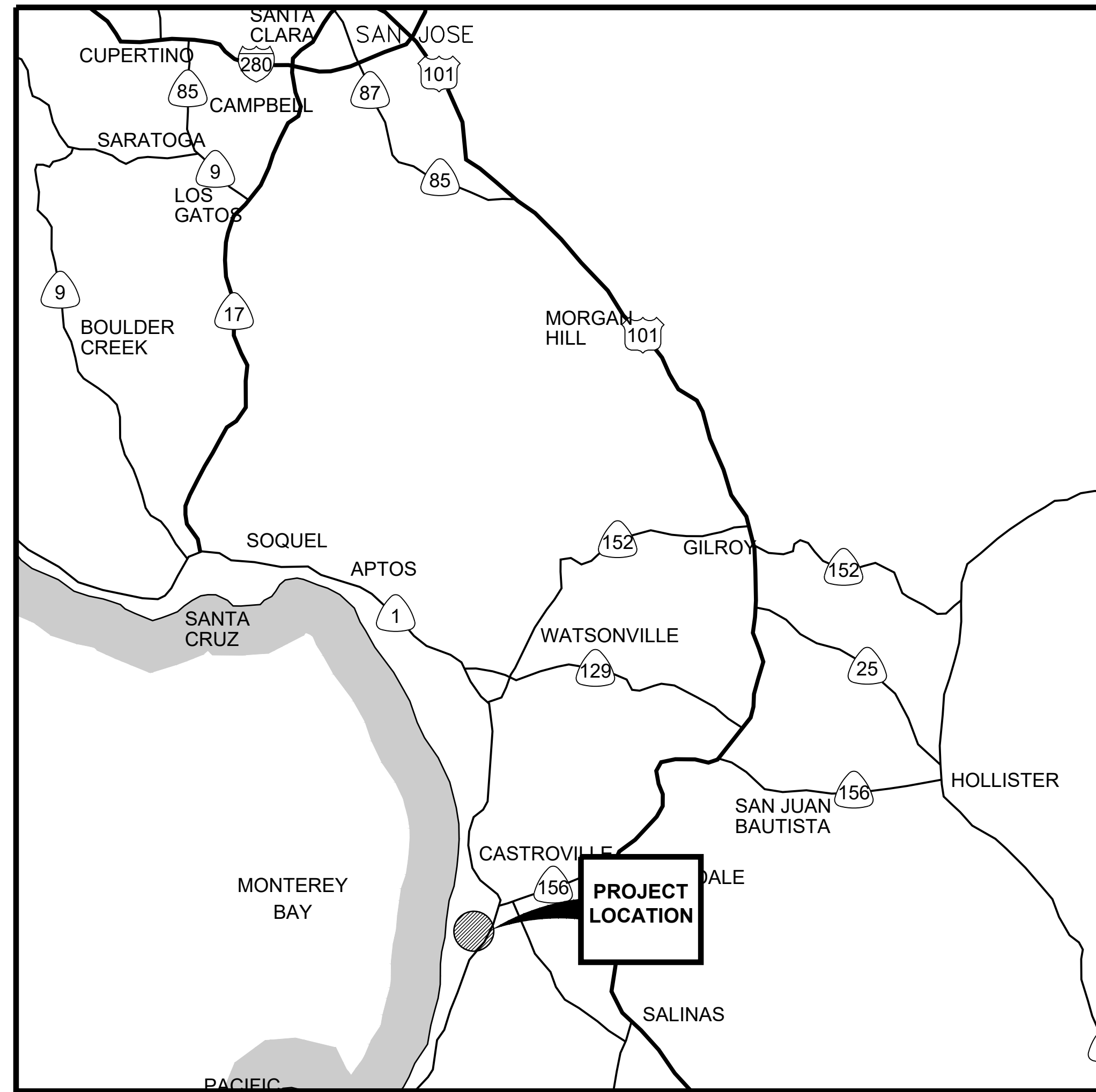


MONITORING WELLS CONSTRUCTION PROJECT

MARINA COAST WATER DISTRICT

OCTOBER 2024



LOCATION MAP
NO SCALE

LIST OF DRAWINGS

SHEET NUMBER	DRAWING NUMBER	TITLE
GENERAL		
1	G-1	TITLE SHEET, LOCATION MAPS, AND DRAWING LIST
2	G-2	GENERAL NOTES
3	G-3	ABBREVIATIONS, REFERENCE SYMBOLS, AND GENERAL LEGEND
CIVIL		
4	C-1	SITE MAP - 4TH AVENUE MONITORING WELLS
5	C-2	SITE MAP - F TANK MONITORING WELL
6	C-3	MONITORING WELL DETAILS



VICINITY MAP
SCALE NTS

DRAFT
NOT FOR CONSTRUCTION

DATE	DESCRIPTION	APPRD	DATE
OCT 2024	AS SHOWN		
	DRAWN: AMK		
	DESIGNED: TW		
	APPROVED: TW		
JOB NO.:	B60094.20	REV	

VERIFY SCALE
 BAR IS ONE INCH ON ORIGINAL DRAWING.
 IF NOT ONE INCH ON THIS SHEET, ADJUST SCALES ACCORDINGLY

GENERAL NOTES

NOTES:

1. THE CONTRACTOR SHALL SATISFY ITSELF AS TO THE EXISTING CONDITIONS PRIOR TO BIDDING THE PROJECT.
2. THE CONTRACTOR SHALL COMPLY WITH THE PROVISIONS OF GENERAL ORDER NO. CAG140001, STATEWIDE NATIONAL POLLUTANT DISCHARGE ELIMINATION SYSTEM (NPDES) PERMIT FOR DRINKING WATER SYSTEM DISCHARGES TO WATERS OF THE UNITED STATES AND SHALL FOLLOW STORM WATER BEST MANAGEMENT PRACTICES.
3. THE CONTRACTOR SHALL AT ALL TIMES MAINTAIN ADEQUATE DRAINAGE PATTERNS AT THE SITE. WATER SHALL NOT BE ALLOWED TO POND OR STAND DUE TO CONTRACTOR ACTIVITY.
4. FOR LANE CLOSURES, THE CONTRACTOR SHALL PROVIDE A TRAFFIC CONTROL PLAN AND OBTAIN APPROVAL FROM THE ENGINEER BEFORE COMMENCING WORK. THE CONTRACTOR SHALL PROVIDE FLAGMEN, CONES, AND/OR BARRICADES, AS NECESSARY TO CONTROL TRAFFIC AND PREVENT HAZARDOUS CONDITIONS, PER THE CALIFORNIA DEPARTMENT OF TRANSPORTATION STANDARD PLANS, SPECIFICATIONS AND MANUAL ON UNIFORM TRAFFIC CONTROL DEVICES, LATEST EDITIONS.
5. THE CONTRACTOR SHALL CONTROL DUST AT ALL TIMES, IN ACCORDANCE WITH CALTRANS STANDARD PLANS, OR AS DIRECTED BY THE ENGINEER.
6. ANY PAVEMENT MARKING AND STRIPING DAMAGED DURING CONSTRUCTION SHALL BE REPLACED BY THE CONTRACTOR, IN ACCORDANCE WITH CALTRANS STANDARD PLANS, OR AS DIRECTED BY THE ENGINEER.
7. NO TRENCHES OR HOLES IN THE PUBLIC RIGHT OF WAY SHALL BE LEFT OPEN OVERNIGHT; USE STEEL PLATING OR HOT-MIX ASPHALT AS REQUIRED TO PROTECT EXCAVATIONS OVERNIGHT.
8. SURVEY MONUMENTS TO BE PROTECTED DURING CONSTRUCTION. DO NOT ADJUST SURVEY MONUMENTS DURING PAVING UNLESS THEY ARE REFERENCED AND RECORDED.
9. THE LOCATIONS OF EXISTING UNDERGROUND UTILITIES NOT SHOWN ON THE DRAWINGS. IT IS THE RESPONSIBILITY OF THE CONTRACTOR TO CONTACT ALL UTILITY COMPANIES SO THAT THOSE COMPANIES MARK THE LOCATIONS OF THEIR UTILITIES PRIOR TO CONTRACTOR EXCAVATIONS OR DRILLING. CONTACT UNDERGROUND SERVICE ALERT (USA) (800) 642-2444 TO MARK UTILITIES, AT LEAST 48 HOURS PRIOR TO EXCAVATING OR DRILLING. ALL UNDERGROUND FACILITIES, PIPING AND UTILITIES ELEVATIONS AND LOCATIONS WHICH WILL AFFECT THE WORK SHALL BE VERIFIED BY THE CONTRACTOR BY POTHOLING.
10. PROTECT ALL EXISTING UTILITIES DURING CONSTRUCTION. DAMAGE TO EXISTING UTILITIES RESULTING FROM THE CONTRACTOR'S CONSTRUCTION ACTIVITIES SHALL BE REPAIRED BY THE CONTRACTOR, AT THE CONTRACTOR'S EXPENSE.
11. CONTRACTOR TO FIELD VERIFY ALL EXISTING SITE CONDITIONS IN THE AREA OF THE WORK PRIOR TO CONSTRUCTION. IF A SIGNIFICANT CONFLICT EXISTS BETWEEN THE CONTRACT DOCUMENTS AND ACTUAL CONDITIONS, CONTRACTOR SHALL NOTIFY ENGINEER IMMEDIATELY.
12. CONTRACTOR'S WORK INCLUDES ALL INCIDENTAL AND APPURTENANT WORK NECESSARY TO PROVIDE A COMPLETE AND FULLY-FUNCTIONING FACILITY. NO ADDITIONAL COMPENSATION WILL BE ALLOWED FOR ANY ACTIVITIES OTHER THAN THOSE LISTED IN THE BID SCHEDULE WITHOUT AN AUTHORIZED CHANGE ORDER.
13. THE CONTRACTOR SHALL SUPPLY AND MAINTAIN SANITARY FACILITIES FOR WORKERS AND VISITORS AT THE CONSTRUCTION SITE. SERVICE AT LEAST TWICE WEEKLY.
14. ALL EXCESS EXCAVATED MATERIAL SHALL BECOME THE PROPERTY OF THE CONTRACTOR AND SHALL BE HANDLED, TRANSPORTED, AND DISPOSED FROM THE SITE IN ACCORDANCE WITH LAWS AND REGULATIONS AT THE CONTRACTOR'S EXPENSE. CONTRACTOR MAY ASSUME, FOR BIDDING PURPOSES ONLY, THAT EXCAVATED SOIL IS NON-HAZARDOUS. HOWEVER, SUCH ASSUMPTION DOES NOT RELIEVE CONTRACTOR'S FULL AND COMPLETE RESPONSIBILITY FOR COMPLYING WITH LAWS AND REGULATIONS, INCLUDING CHARACTERIZATION OF EXCESS MATERIAL FOR MANAGEMENT AND DISPOSAL. CONTRACTOR SHALL PROMPTLY NOTIFY AND CONFER WITH ENGINEER IF ANY EVIDENCE OF SOIL CONTAMINATION IS OBSERVED.
15. UNLESS OTHERWISE NOTED, ALL PAVEMENT, GUTTERS, WALKS, FENCES AND OTHER SURFACE IMPROVEMENTS THAT ARE DISTURBED OR DAMAGED BY CONSTRUCTION SHALL BE RESTORED TO ORIGINAL CONDITIONS BY CONTRACTOR WITHOUT ADDITIONAL COST TO THE DISTRICT.
16. THE CONTRACTOR SHALL SELECT, INSTALL AND MAINTAIN SHORING, SHEETING, BRACING, AND SLOPING AS NECESSARY TO MAINTAIN SAFE EXCAVATIONS.
17. CONTRACTOR AGREES THAT IN ACCORDANCE WITH GENERALLY ACCEPTED CONSTRUCTION PRACTICES, CONTRACTOR SHALL ASSUME SOLE AND COMPLETE RESPONSIBILITY FOR JOB SITE CONDITIONS DURING THE COURSE OF THE PROJECT, INCLUDING SAFETY OF ALL PERSONS AND PROPERTY; THAT THIS REQUIREMENT SHALL BE MADE TO APPLY CONTINUOUSLY AND NOT BE LIMITED TO NORMAL WORKING HOURS.
18. CONTRACTOR SHALL MAINTAIN TEMPORARY FENCING DURING THE CONSTRUCTION PERIOD.

BASIS OF COORDINATES

CALIFORNIA STATE PLANE ZONE 3 COORDINATE SYSTEM
NAD 83 (2011) EPOCH 2010.00 BASED ON OPUS SOLUTION.

BASIS OF ELEVATION

NAVD (NORTH AMERICA VERTICAL DATUM) 1988 BASED
ON OPUS SOLUTION.

DRAFT

NOT FOR CONSTRUCTION



577 AIRPORT BLVD, SUITE 500
BURBANK, CA CALIFORNIA 90410
(650) 292-9100 • FAX (650) 552-9012

MONITORING WELLS CONSTRUCTION PROJECT

MARINA COAST WATER DISTRICT

GENERAL NOTES

DATE:	OCT 2024
SCALE:	AS SHOWN
DRAWN:	AMK
DESIGNED:	TW
APPROVED:	TW
JOB NO.:	B60094.20
DESCRIPTION	REV
APPRD	DATE

VERIFY SCALE
BAR IS ONE INCH ON ORIGINAL DRAWING.
0 1"
IF NOT ONE INCH ON THIS SHEET, ADJUST SCALES ACCORDINGLY

SHEET NUMBER

G-2

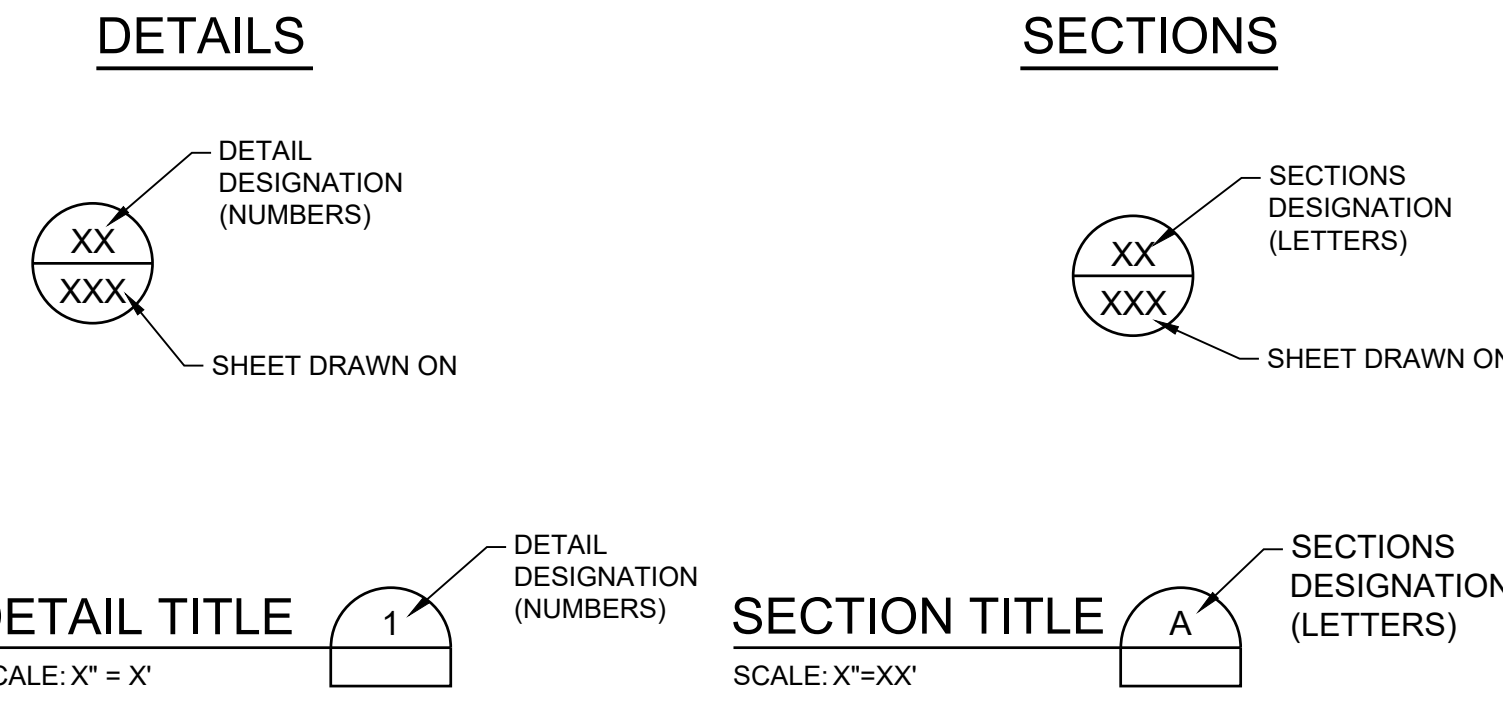
2 OF 6

DRAFT DESIGN SUBMITTAL

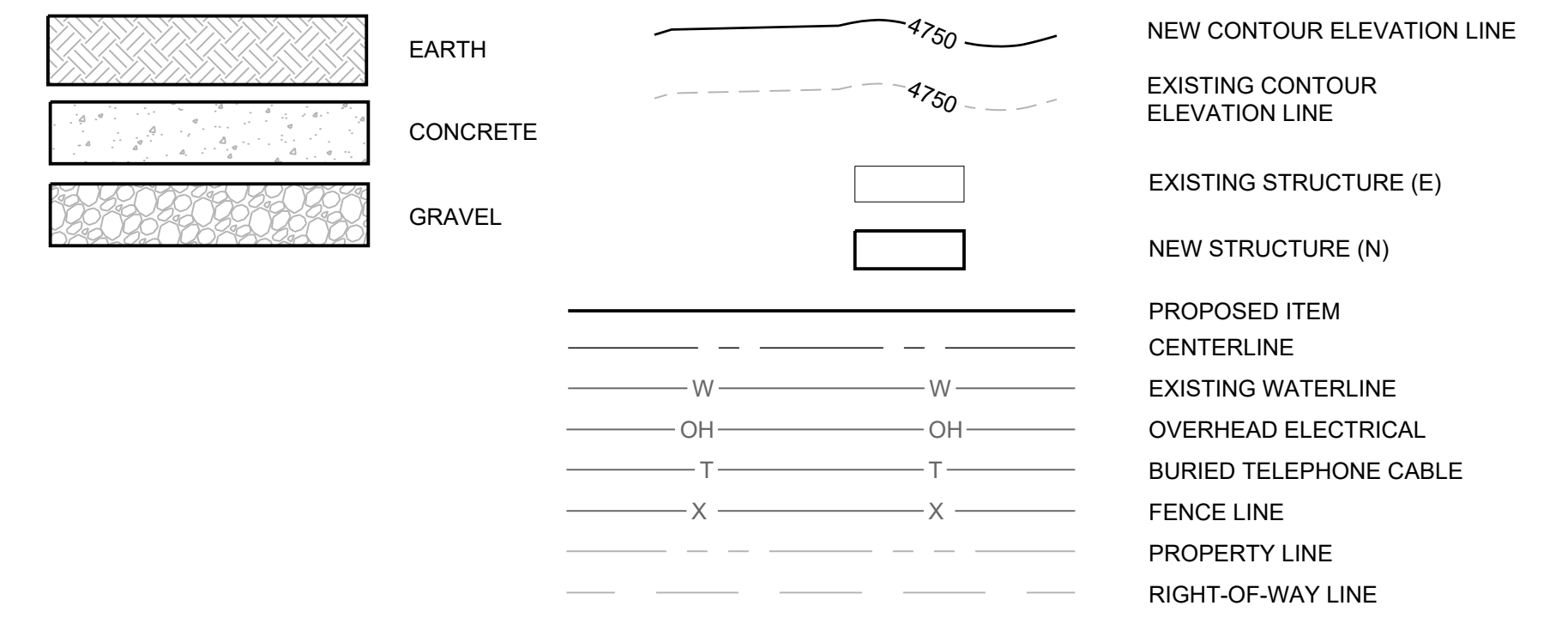
ABBREVIATIONS

A	AMP	J	JUNCTION BOX	U	UNDERGROUND
ABAN	ABANDON	JB	JOINT(S)	UG	UNKNOWN
AC	ASPHALTIC CONCRETE	JT(S)	JOINT(S)	UNK	UNKNOWN
ACI	AMERICAN CONCRETE INSTITUTE			V	VAULT
ADDIT	ADDITIONAL	L	LENGTH	V	VACUUM
AGG	AGGREGATE	LD	DEVELOPMENT LENGTH	VAC	VERTICAL
AISC	AMERICAN INSTITUTE OF STEEL CONSTRUCTION			VFD	VARIABLE FREQUENCY DRIVE
ALUM	ALUMINIUM	M	MODIFIED	VOL	VOLUME
APPROX	APPROXIMATE	(E)	MAXIMUM		
ARV	AIR RELEASE VALVE	MAX	MACHINE BOLT	W	WATER
ASTM	AMERICAN SOCIETY FOR TESTING MATERIALS	MB	MOTOR CONTROL CENTER	W/	WITH
AWS	AMERICAN WELDING SOCIETY	MCC	MECHANICAL	WC	WATER COLUMN
		MECH	MANUFACTURER	W/O	WITHOUT
B		MIN	MINIMUM	WL	WATER LINE
BM	BENCHMARK	MJ	MECHANICAL JOINT	WM	WATER METER
BMP	BEST MANAGEMENT PRACTICE			WMM	WELDED WIRE MESH
BOT	BOTTOM	N	NORTH	WSP	WELDED STEEL PIPE
BLKG	BLOCKING	N	NEW	WTR	WATER
BF	BLIND FLANGE	(N)	NOT APPLICABLE		
BW	BACKWASH	NA	NOT IN CONTRACT		
		NIC	NUMBER		
C		NO.	NATIONAL POLLUTANT DISCHARGE ELIMINATION SYSTEM		
CB	CATCH BASIN	NPDES	NATIONAL PIPE THREAD		
C.C.	CENTER TO CENTER	NPT	NOT TO SCALE		
CDF	CONTROL DENSITY FILL	NTS			
CHEM	CHEMICAL				
CFM	CUBIC FEET PER MINUTE	O	ON CENTER		
C/L	CENTERLINE	OC	OUTSIDE DIAMETER		
CLR	CLEAR	O.D.	OVERFLOW		
CLSM	CONTROLLED LOW STRENGTH MATERIAL	OF			
CMU	CONCRETE MASONRY UNIT				
CO	CLEANOUT	P	PIPE		
COL	COLUMN	PB	PULL BOX		
CONC	CONCRETE	PCO	PRESSURE CLEANOUT		
CONST(R)	CONSTRUCTION	PL	PLATE		
CONT	CONTINUATION	PO	PUSH ON JOINT		
CPLG	COUPLING	PRV	PRESSURE RELIEF VALVE		
		PSF	POUNDS PER SQUARE FOOT		
D		PSIG	POUNDS PER SQUARE INCH, GAUGE		
D	DRAIN	PT	POINT		
DCA	DIGESTER COVER AIR	PVC	POLYVINYL CHLORIDE		
DET	DETAIL	PVMT	PAVEMENT		
DFPT	DOUGLAS FIR PRESSURE TREATED	PW	POTABLE WATER		
DI	DUCTILE IRON				
DIA.	DIAMETER	Q	QUICK CONNECT		
DIP	DUCTILE IRON PIPE	QC	QUANTITY		
DIM	DIMENSION	QTY			
DN	DOWN				
DW	DRINKING (POTABLE) WATER	R	RADIUS		
DWG	DRAWING	R	RIGHT OF WAY		
		R/W	REINFORCED CONCRETE (PIPE)		
E		RC(P)	ROOF DRAIN		
(E)	EXISTING	RD	REDUCER		
E	EAST	REINF	REINFORCED(ING)		
EA	EACH	REQD	REQUIRED		
EL(EV)	ELEVATION	RES	RESIDUAL		
ELEC	ELECTRICAL	RPP	REDUCED PRESSURE PRINCIPLE BACKFLOW PREVENTOR		
EMH	ELECTRICAL MANHOLE				
EP	EDGE OF PAVEMENT	S	SOUTH		
EW	EACH WAY	S	SCHEDULE		
EXP	EXPANSION	SD(M)	STORM DRAIN (MANHOLE)		
		SECT	SECTION		
F		SHT(S)	SHEET(S)		
(F)	FUTURE	SIM	SIMILAR		
FCA	FLANGED COUPLING ADAPTER	SMH	SEWER MANHOLE		
FCO	FLOOR CLEAN OUT	SPEC(S)	SPECIFICATION(S)		
FD	FLOOR DRAIN	SQ	SQUARE		
FG	FINAL GRADE	SS	SANITARY SEWER		
FH	FIRE HYDRANT	SST	STAINLESS STEEL		
FIG	FIGURE	STA.	STATION		
FIN	FINISH	STD	STANDARD		
FM	FLOW METER	STL	STEEL		
FPM	FEET PER MINUTE	STPUD	SOUH TAHOE PUBLIC UTILITIES DISTRICT		
FT	FEET				
FT BGS	FEET BELOW GROUND SURFACE	T	TOP OF		
FW	FIRE WATER	T/	THICKNESS		
		T	TELEPHONE		
G		TEMP	TEMPORARY		
G	GAS	THK	THICK		
GA	GAGE	TOC	TOP OF CONCRETE		
GAL	GALLON	TRPA	TAHOE REGIONAL PLANNING AGENCY		
GALV	GALVANIZED	TYP.	TYPICAL		
GPM	GALLONS PER MINUTE				
GR	GRADE				
GS	GALVANIZED STEEL				
GV	GATE VALVE				
H					
H	HEIGHT				
HB	HOSE BIB AND HOSE RACK				
HDLPE	HIGH-DENSITY LINEAR POLYETHYLENE				
HORIZ	HORIZONTAL				
HP	HORSE POWER				
HR	HOUR				
I					
I.D.	INSIDE DIAMETER				
I.E.	INVERT ELEVATION				
INV	INVERT				
IN.	INCHES				
IN. WC	INCHES OF WATER COLUMN				
IRR(G)	IRRIGATION				

REFERENCE SYMBOLS



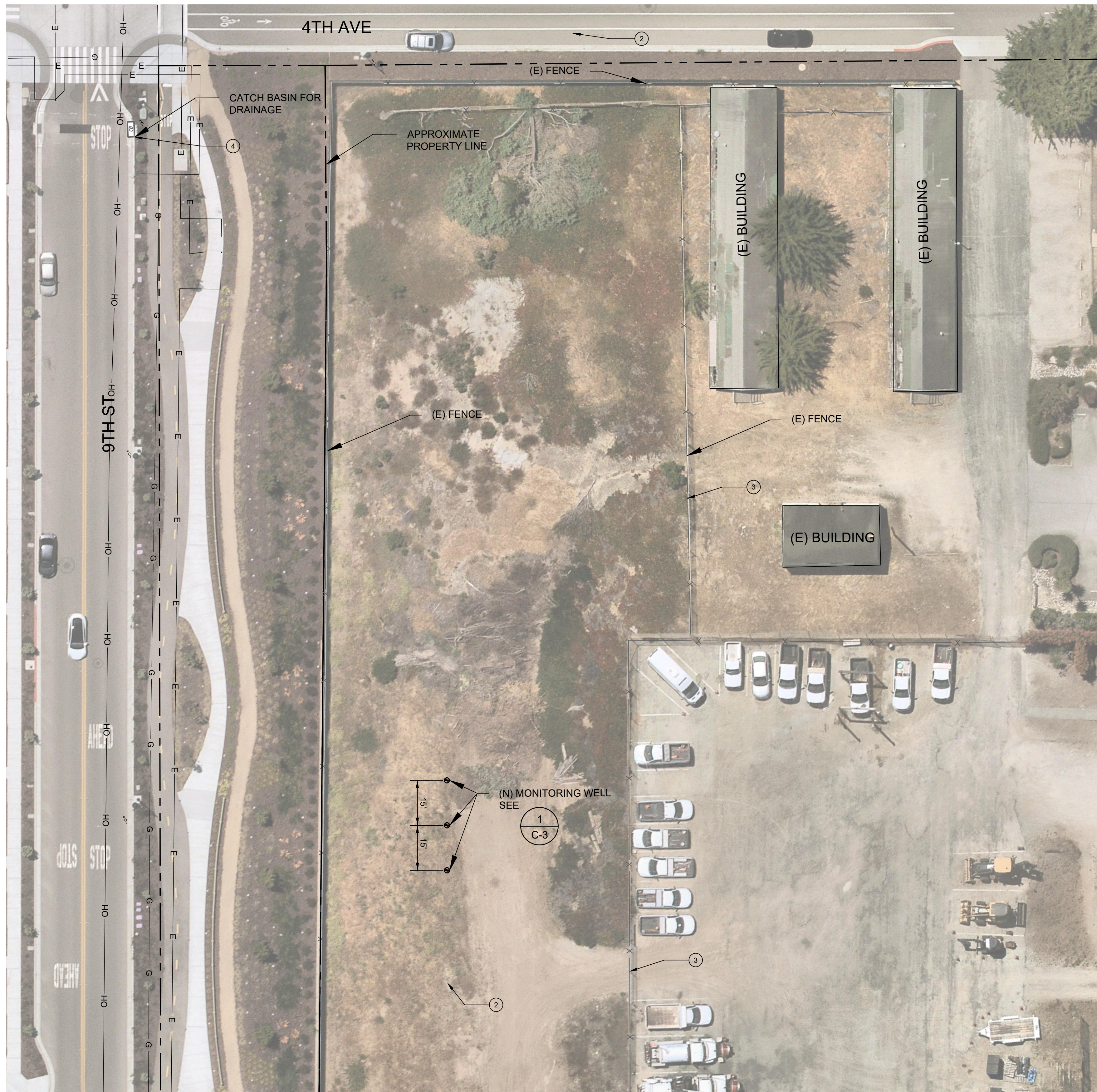
GENERAL LEGEND



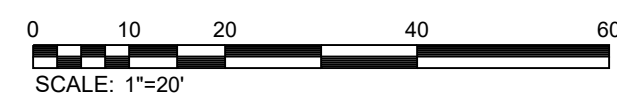
NOTE: THIS IS A STANDARD SHEET. SOME ABBREVIATIONS AND SYMBOLS MAY NOT APPEAR WITHIN THE DRAWING SET FOR THIS PROJECT.

DATE:	OCT 2024	SCALE:	AS SHOWN	DRAWN:	AMK	DESIGNED:	TW	APPROVED:	TW	JOB NO.:	B60094.20	REV	
VERIFY SCALE	BAR IS ONE INCH ON ORIGINAL DRAWING. IF NOT ONE INCH ON THIS SHEET, ADJUST SCALES ACCORDINGLY.												
SHEET NUMBER	G-3												

DRAFT
 NOT FOR CONSTRUCTION



PLAN



DRAFT
NOT FOR CONSTRUCTION

CONSTRUCTION NOTES:

- ① EXISTING SITE CONDITIONS ARE BASED ON INFORMATION PROVIDED BY MONTEREY COUNTY, CIVILGRID AND NEARMAP. THE OWNER, ENGINEER, AND DESIGN ENGINEER ARE NOT RESPONSIBLE FOR THE COMPLETENESS, LOCATIONS, OR SIZES SHOWN. CONTRACTOR SHALL POT HOLE TO IDENTIFY AND CONFIRM LOCATIONS OF UTILITIES.
- ② CONTRACTOR SHALL USE THE SITE FOR PARKING AND LAYDOWN AREA. CONTRACTOR SHALL NOT USE STREET FOR PARKING OR LAYDOWN.
- ③ CONTRACTOR MAY TEMPORARILY REMOVE FENCES IN ORDER TO PERFORM WORK. CONTRACTOR SHALL SAFELY STORE FENCING FOR REINSTALLATION FOLLOWING COMPLETION OF WORK AT THE SITE. CONTRACTOR SHALL REPLACE ANY DAMAGED FENCING AT NO COST TO THE OWNER.
- ④ CONTRACTOR SHALL DISCHARGE DEVELOPMENT WATER IN CATCH BASIN. CONTRACTOR SHALL DISCHARGE IN ACCORDANCE TO SPECIFICATION SECTION 02520.

**MONITORING WELLS CONSTRUCTION
PROJECT
MARINA COAST WATER DISTRICT
SITE MAP - 4TH AVENUE MONITORING
WELLS**

DATE:	OCT 2024	DESIGNER:	AMK
SCALE:	AS SHOWN	DRAWN:	TW
APPROVED:		APPROVED:	TW
JOB NO.:	B60094.20	REV	
DESCRIPTION		APPRD	DATE

VERIFY SCALE
BAR IS ONE INCH ON ORIGINAL DRAWING.
IF NOT ONE INCH ON THIS SHEET, ADJUST SCALES ACCORDINGLY

SHEET NUMBER
C-1
4 OF 6

DRAFT DESIGN SUBMITTAL

Path: G:\EKL_CONSTRUCTION_DWG\B60094.20 C-Sheets.dwg Plot Date: October 22, 2024 - 4:49 PM CADD User: Ana Kirkwood



PLAN



DRAFT
NOT FOR CONSTRUCTION

CONSTRUCTION NOTES:

- ① EXISTING SITE CONDITIONS ARE BASED ON INFORMATION PROVIDED BY MONTEREY COUNTY, CIVILGRID AND NEARMAP. THE OWNER, ENGINEER, AND DESIGN ENGINEER ARE NOT RESPONSIBLE FOR THE COMPLETENESS, LOCATIONS, OR SIZES SHOWN. CONTRACTOR SHALL POthOLE TO IDENTIFY AND CONFIRM LOCATIONS OF UTILITIES.
- ⑤ CONTRACTOR SHALL DISCHARGE DEVELOPMENT WATER IN SWALE. CONTRACTOR SHALL DISCHARGE IN ACCORDANCE TO SPECIFICATION SECTION 02520.
- ⑥ THE MONITORING WELL SHALL BE CONSTRUCTED WITHIN THE DESIGNATED 20-FOOT EASEMENT OF ACCESS ROAD. THE WELL SHOULD BE POSITIONED NEAR THE BOUNDARY OF THE EASEMENT TO ENSURE THAT IT DOES NOT INTERFERE WITH THE VEHICULAR TRAFFIC. THE USE OF THE EASEMENT SHALL BE COORDINATED WITH THE DISTRICT.
- ⑦ THE CONTRACTOR MAY USE WATKINS GATE ROAD AND ACCESS ROAD FOR PARKING AND LAYDOWN AREA. WATKINS GATE ROAD IS A CLOSED ROAD. HOWEVER, THE CONTRACTOR SHALL ENSURE THAT THE DISTRICT HAS ACCESS TO THE TANK VIA THESE ROADS AT ALL TIMES.

MONITORING WELLS CONSTRUCTION PROJECT

MARINA COAST WATER DISTRICT

SITE MAP - F TANK MONITORING WELL

DATE:	OCT 2024
SCALE:	AS SHOWN
DRAWN:	AMK
DESIGNED:	TW
APPROVED:	TW
JOB NO.:	B60094.20

VERIFY SCALE
BAR IS ONE INCH ON ORIGINAL DRAWING.
IF NOT ONE INCH ON THIS SHEET, ADJUST SCALES ACCORDINGLY

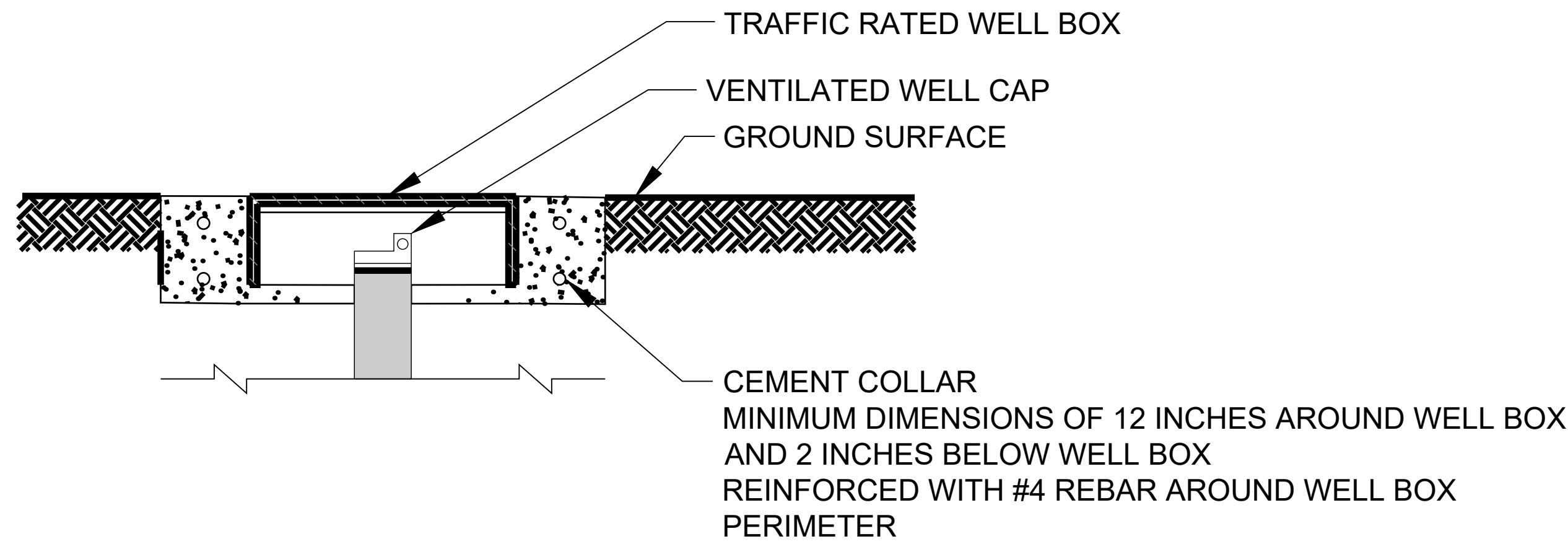
SHEET NUMBER

C-2
5 OF 6

DRAFT DESIGN SUBMITTAL

REV	DESCRIPTION	APPRD	DATE

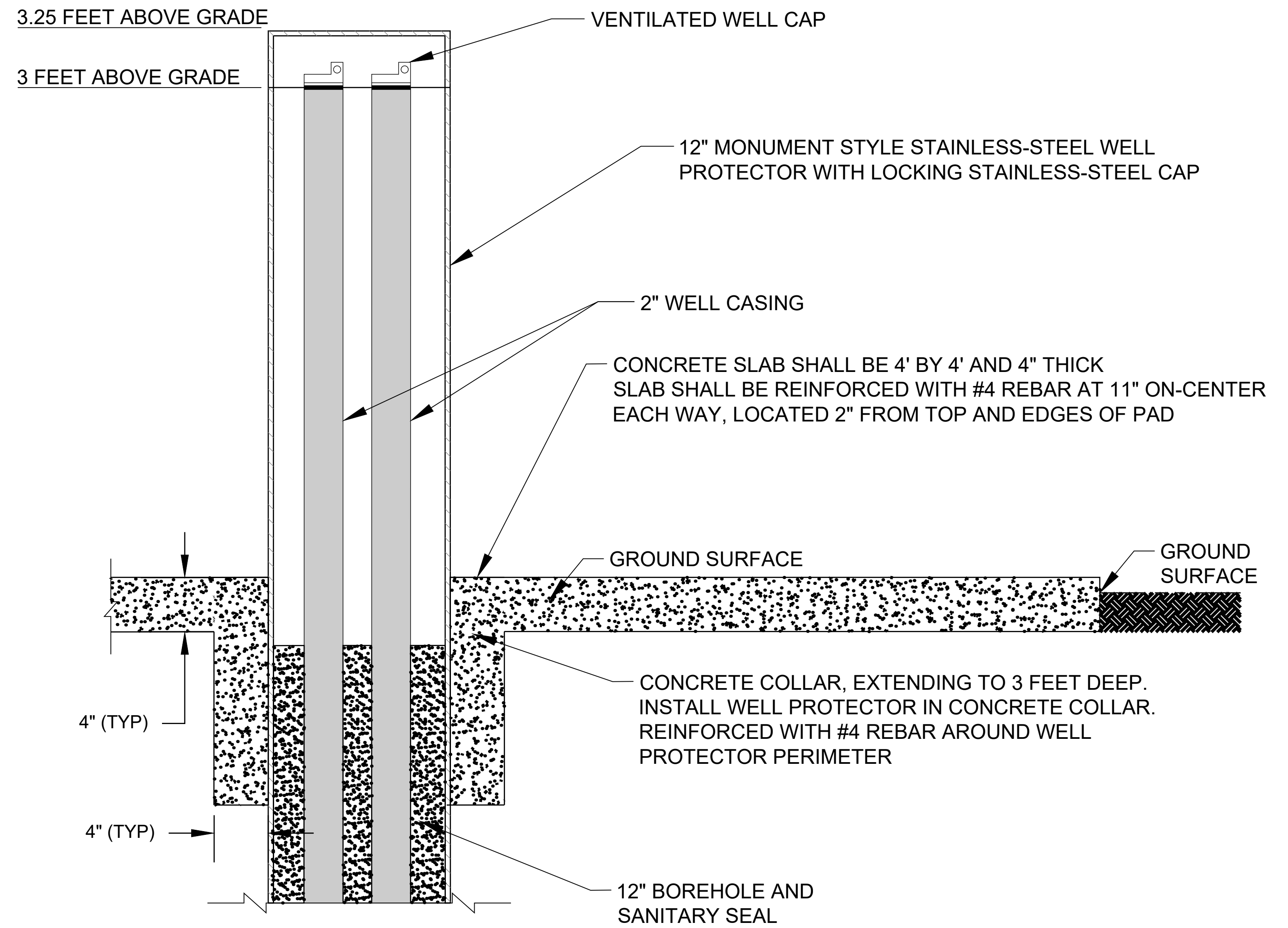
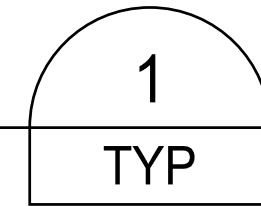
eki environment & water
577 AIRPORT BLVD, SUITE 500
BURLINGAME, CALIFORNIA 94010
(650) 292-3100 • FAX (650) 652-9012



SEE WELL SPECIFICATION 02520 FOR WELL PROFILES

4TH AVENUE MONITORING WELL SURFACE COMPLETION

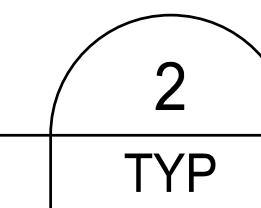
NOT TO SCALE



SEE WELL SPECIFICATION 02520 FOR WELL PROFILES

F TANK MONITORING WELL SURFACE COMPLETION

NOT TO SCALE

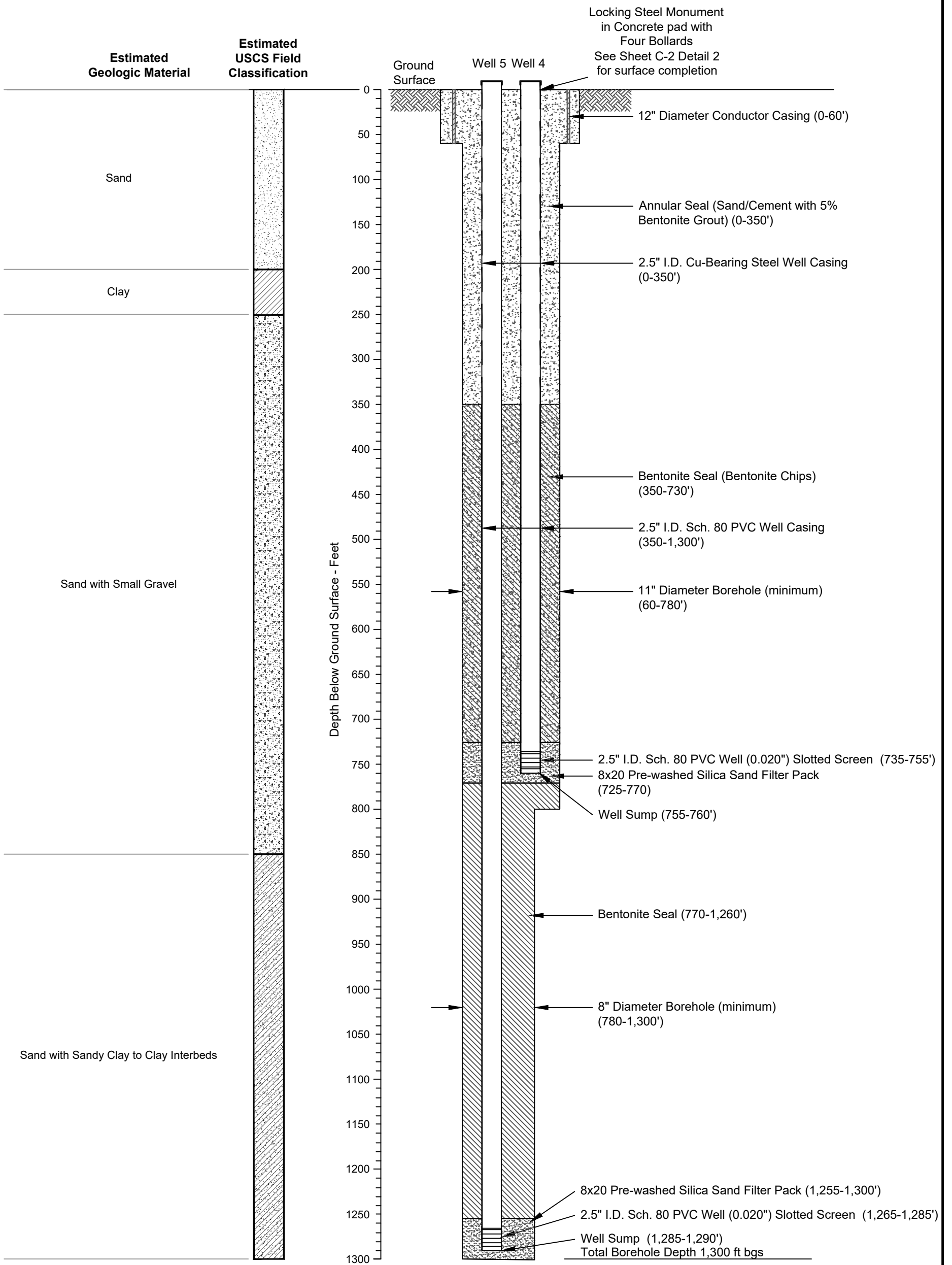


DRAFT

NOT FOR CONSTRUCTION

DATE	DESCRIPTION	APPRD	DATE
OCT 2024	AS SHOWN		
	DRAWN: AMK		
	DESIGNED: TW		
	APPROVED: TW		
JOB NO.:	B60094.20	REV	

VERIFY SCALE
BAR IS ONE INCH ON ORIGINAL DRAWING.
IF NOT ONE INCH ON THIS SHEET, ADJUST SCALES ACCORDINGLY



NOTES:

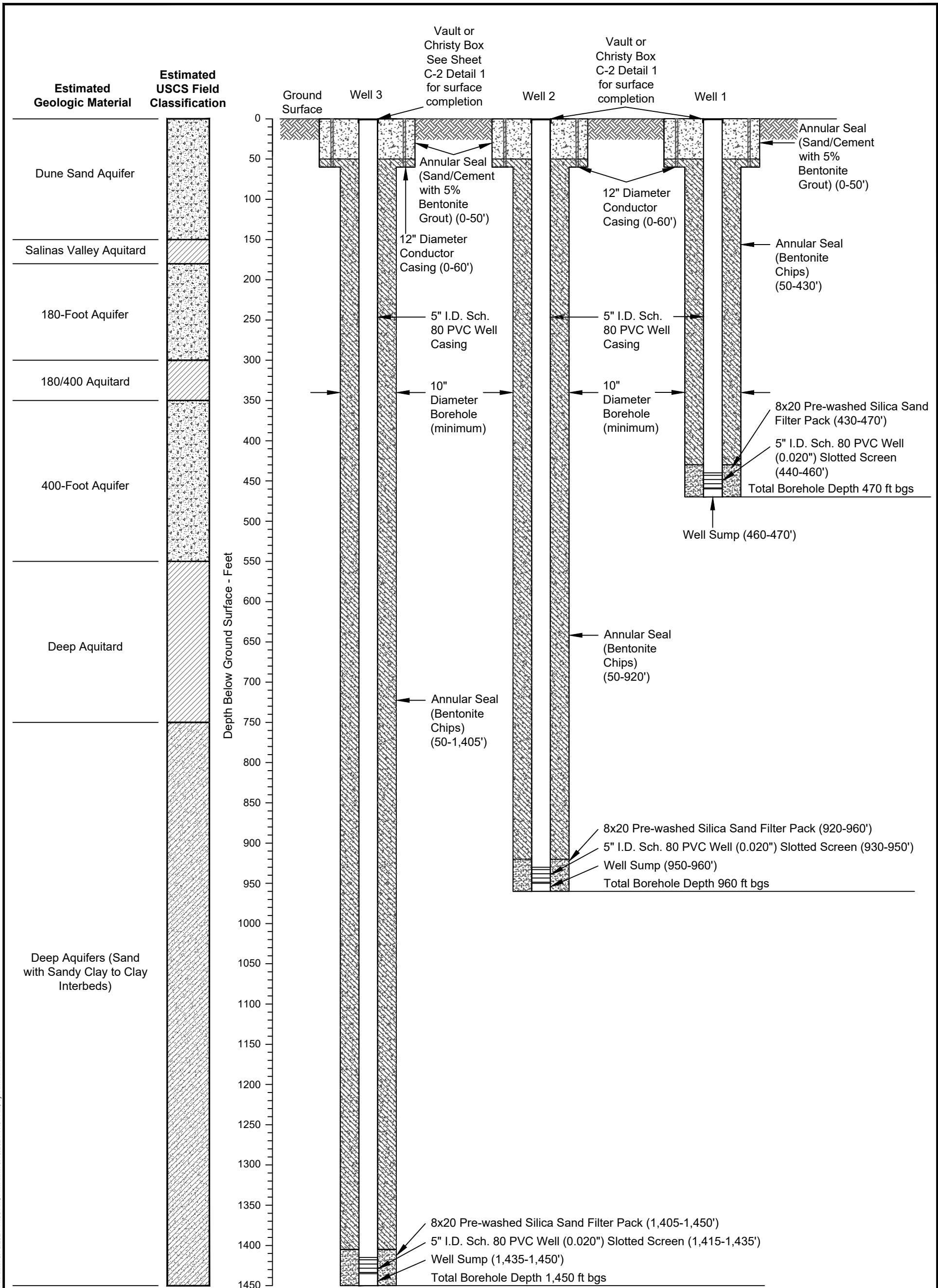
1. Well design profile is schematic only and not to scale.
2. Estimated Geologic Material is based on available well logs near proposed project site. Well design subject to modification based on actual site geologic conditions encountered.

ABBREVIATIONS:

- I.D. = inside diameter
- ft bgs = feet below ground surface
- PVC = polyvinyl chloride
- Sch. = schedule

F Tank Monitoring Well Design Profile

G:\B60094.20\2024-04\Figure 1 And 2 - Well Design Profile.dwg, File date: 9/10/2024 11:47 AM, Print date: 9/10/2024 11:52 AM, by: Ana Kirkwood



NOTES:

1. Well design profile is schematic only and not to scale.
2. Estimated Geologic Material is based on available well logs near proposed project site. Well design subject to modification based on actual site geologic conditions encountered.

ABBREVIATIONS:

- I.D. = inside diameter
- ft bgs = feet below ground surface
- PVC = polyvinyl chloride
- Sch. = schedule

4th Avenue Monitoring Wells Design Profile

G:\B60094_20\2024-04\Figure 1 And 2 - Well Design Profile.dwg, File date: 9/10/2024 11:54 AM, Print date: 9/10/2024 11:54 AM, by: Ana Kirkwood